



DOUBLE VISION DUE TO EYE
MISALIGNMENT = STRABISMUS

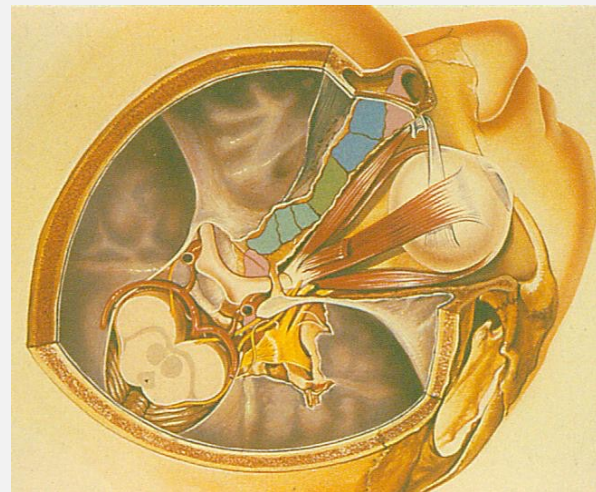
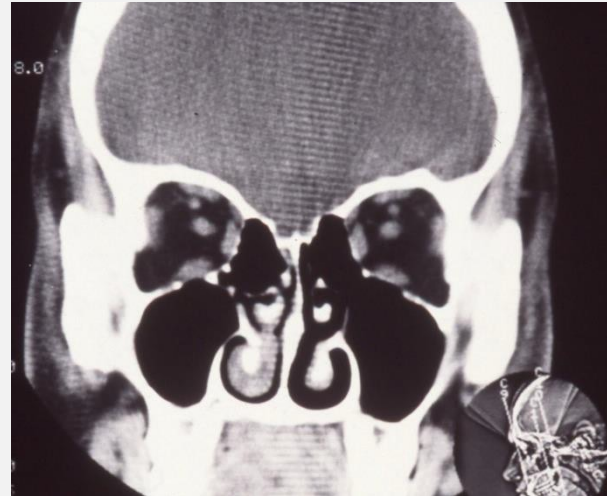
Kimberly Cockerham, MD, FACS

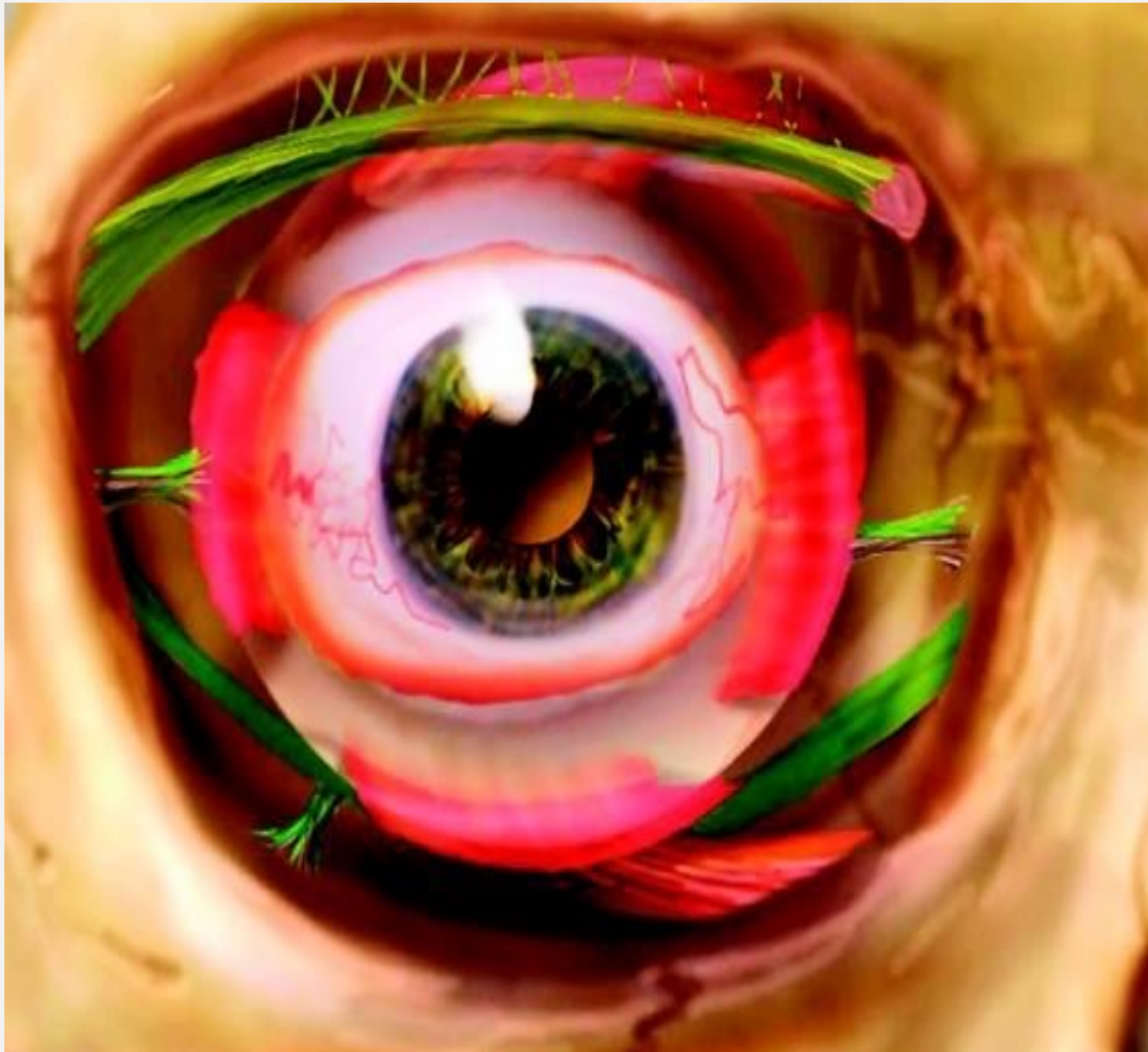
If the eyes are not aligned, you will see a blur or double image



WHY DO I SEE DOUBLE ?

- **Extraocular muscle**
 - Enlargement
 - Scarring (fibrosis)
- **Neuro-muscular junction problem**
 - Myasthenia Gravis
- **Brain Issue**
 - Altered vision breaks fusion



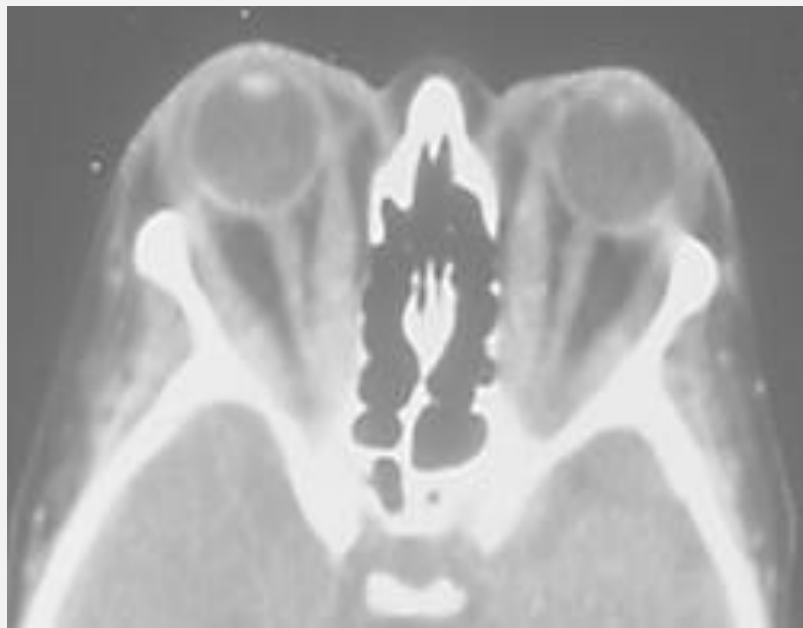


PRE-OPERATIVE TESTING

- Vision
- Color vision
- Visual field
- Eye movements
- Imaging with CT or MRI

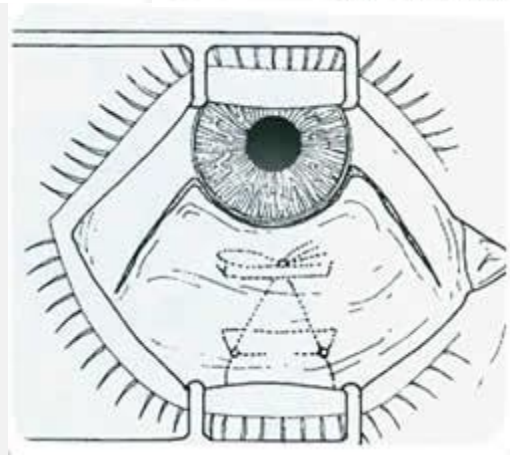
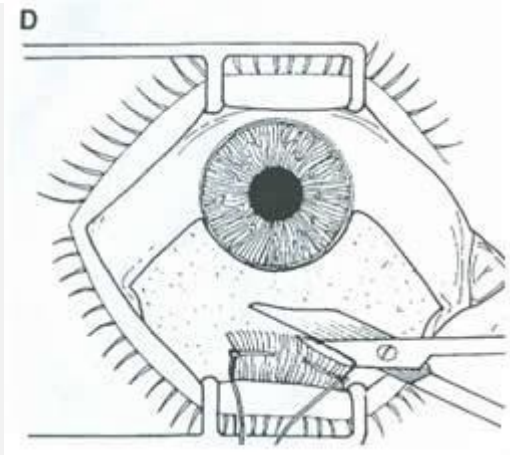
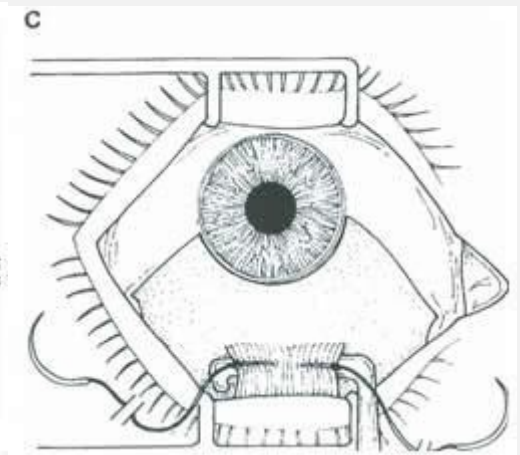
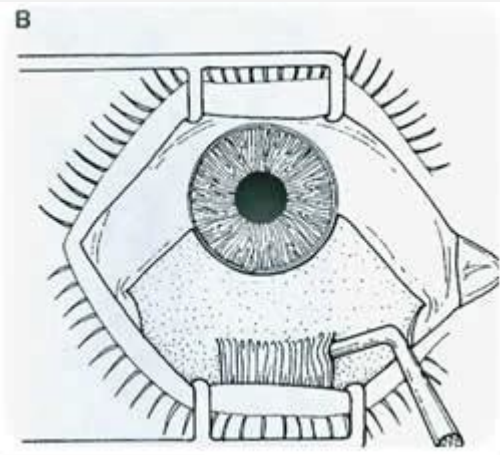
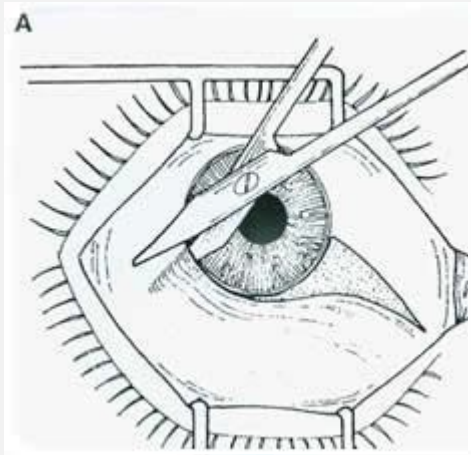






INFORMED CONSENT

- Common:
 - Redness
 - Foreign body sensation
 - Tearing
 - Mucous
- Uncommon
 - Persistent or worsened double vision or drifting
 - Bleeding
 - Infection
 - Suture breakage
 - Need for Botox or additional surgery
 - Change in eyelid position
 - Globe perforation







DOUBLE VISION DUE TO EYE
MISALIGNMENT = STRABISMUS

Kimberly Cockerham, MD, FACS