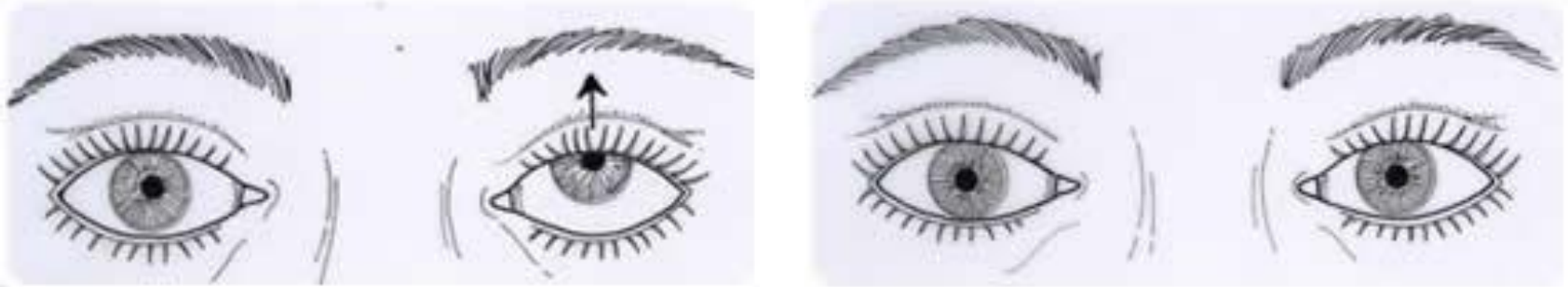


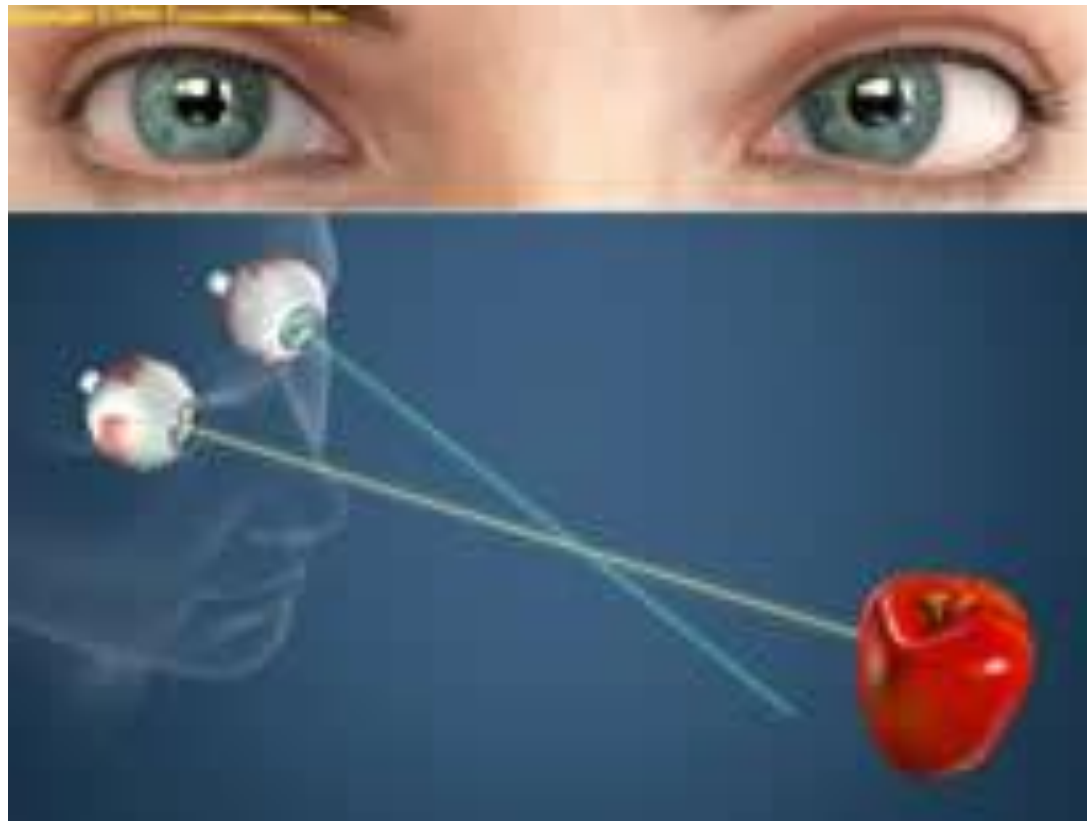
# Double Vision Due to Strabismus



Kimberly Cockerham, MD, FACS  
Central Valley Eye Medical Group

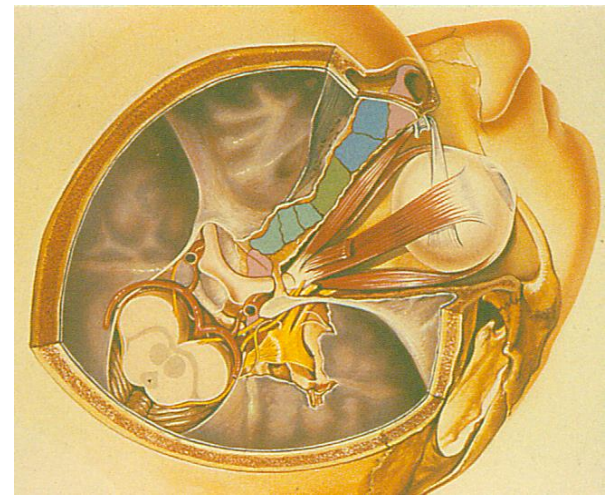
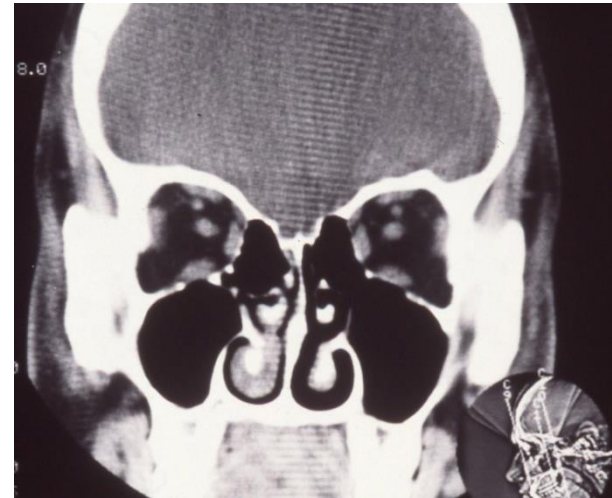
If the eyes are not aligned

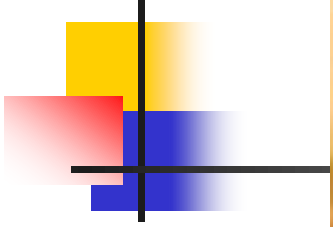
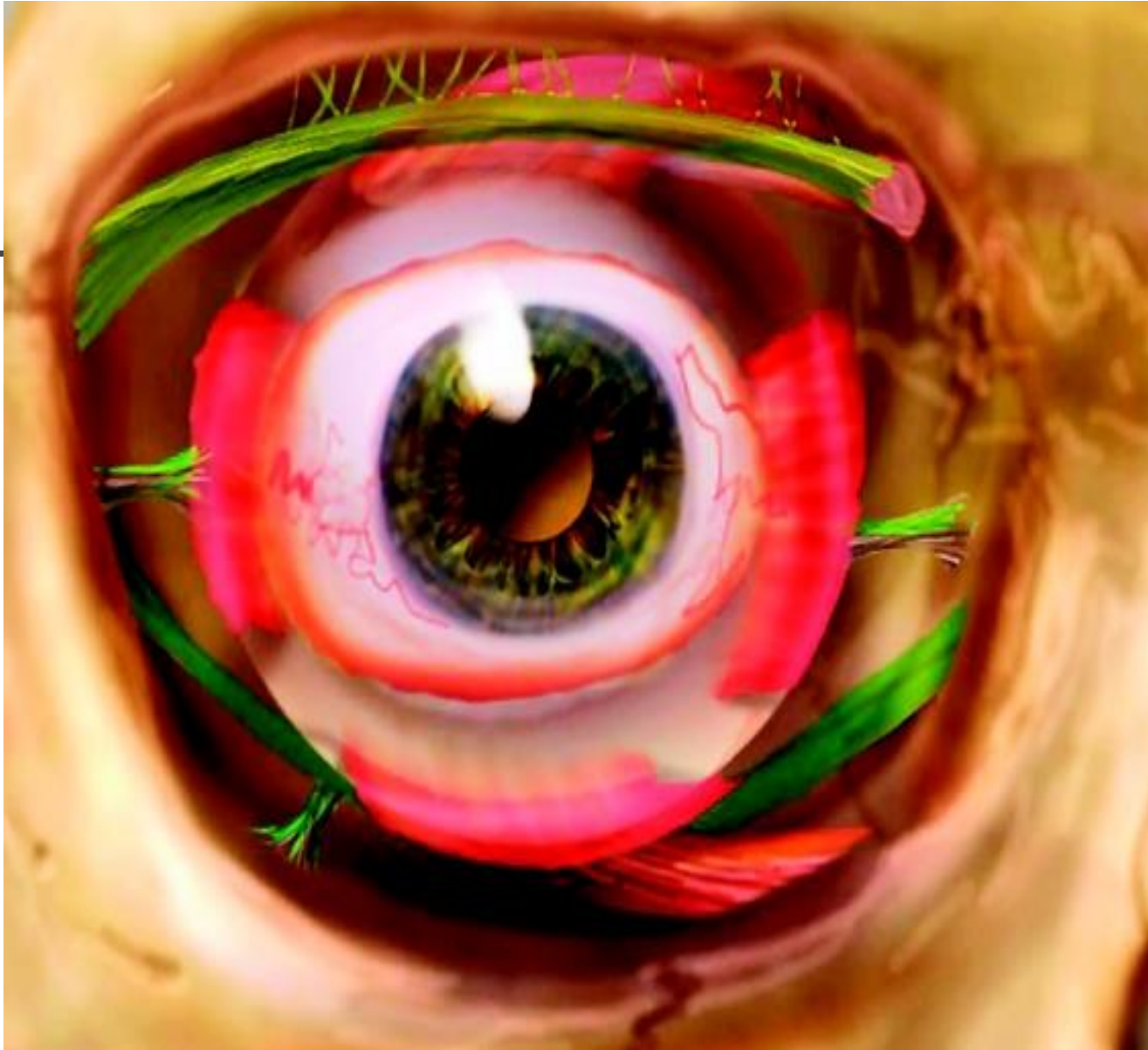
– you will see a blur or double image



# Why Do I See Double ?

- **Extraocular muscle**
  - Enlargement
  - Scarring (fibrosis)
- **Neuro-muscular junction problem**
  - Myasthenia Gravis
- **Brain Issue**
  - Altered vision breaks fusion

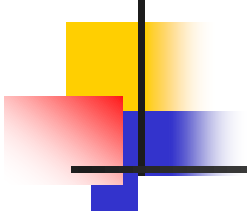


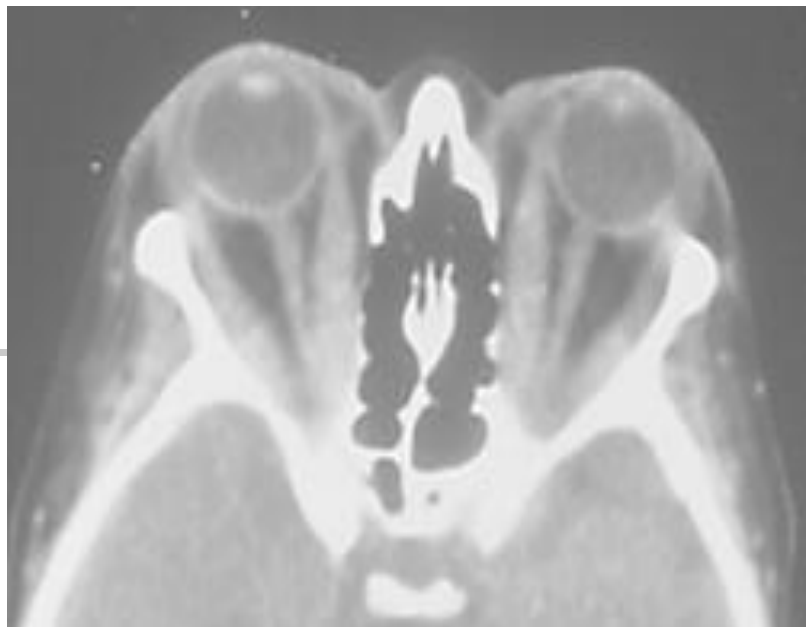


# Pre-Operative Testing

- Vision
- Color vision
- Visual field
- Eye movements
- Imaging with CT or MRI









# Informed Consent

---

- Common:

- Redness
- Foreign body sensation
- Tearing
- Mucous

- Uncommon

- Persistent or worsened double vision or drifting
- Bleeding
- Infection
- Suture breakage
- Need for Botox or additional surgery



