



**INTENSE PULSED
LIGHT (IPL)**



**Kimberly
Cockerham, MD**

FACIAL AESTHETICS, LASERS & RECONSTRUCTIVE SURGERY

Central Valley Eye Medical Group, Inc.

VERSATILE



EXCELLENT WELL TESTED PROTOCOLS

Select Preset: ST

By Clinical | By Name

Skin Type: I II III IV V

Primary Condition: Rosacea/Telang. Erythema of Rosacea Melasma Poikiloderma

Age Spots/Telang. (M) Age Spots/Telang. (S) Age Spots/Telang. (II-F)

Lesion Depth: Shallow Medium Deep

Treatment Parameters:

OK Cancel

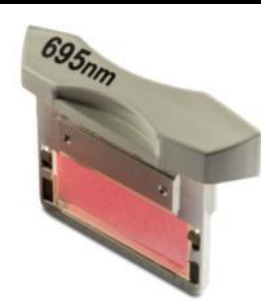
VERSATILE AND EFFICACIOUS

Six filters with software recognition

Two SapphireCool light guides



CUSTOMIZABLE



Rosacea
Light
Pigmentation

IPL Skin
Treatments
Vascularity

IPL Skin
Treatments
Pigmentation
Vascularity
Facial veins

Larger facial
veins
Pigmentation

Hair Removal,
lighter skin

Hair Removal,
darker skin

UNIVERSAL IPL SAPPHIRECOOL LIGHT GUIDES

Maximize comfort: continuous contact cooling

Fast & Flexible: Treat larger or smaller areas



IPL TREATMENT – ROSACEA



before



after 4 treatments

courtesy of Mariela Nazar, MD

UNIVERSAL IPL TREATMENT – TELANGLECTASIA



before



after 2 treatments

courtesy of Mariela Nazar, MD







M22 TREATMENT OF PORT WINE STAIN



IPL TREATMENT – BROWN SPOTS



before



after 2 treatments

courtesy of Mariela Nazar, MD



before



after 2 treatments

courtesy of Mariela Nazar, MD





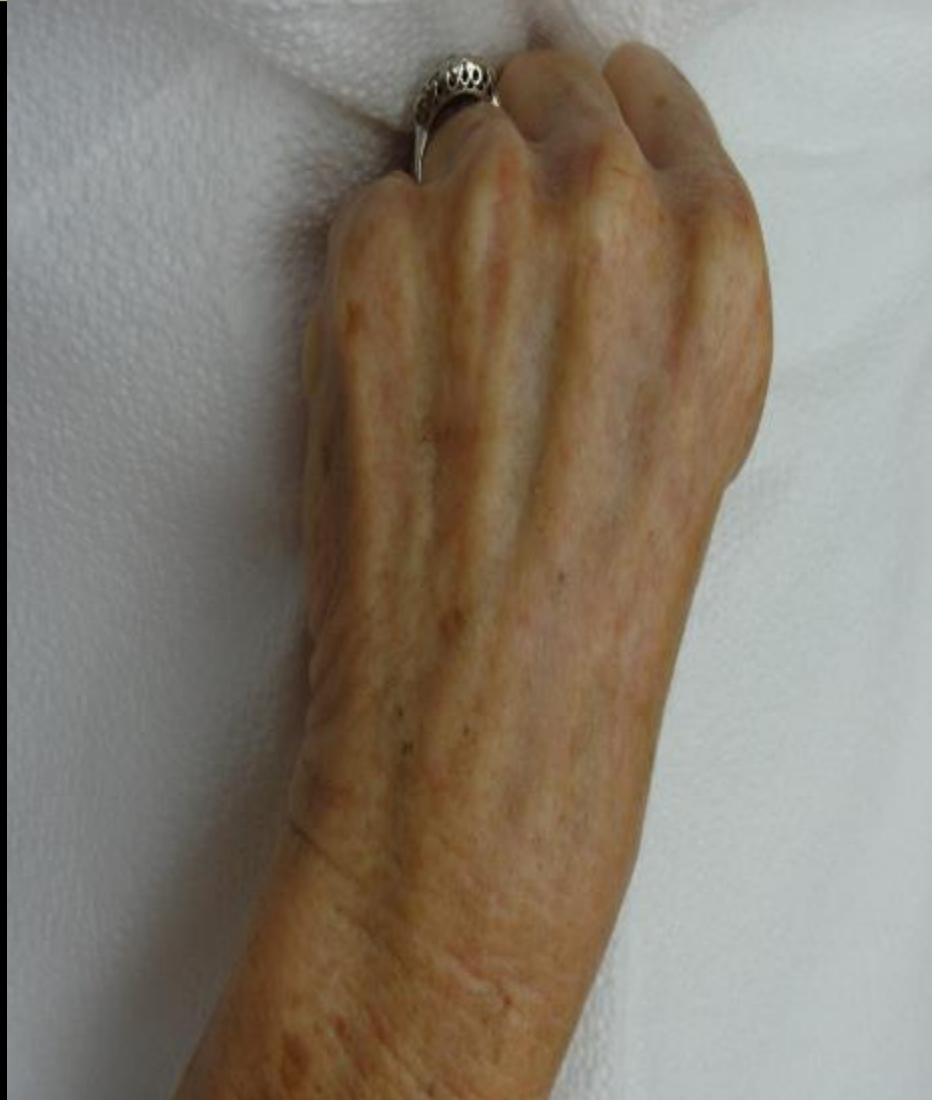


before



after 1 treatment

courtesy of Mariela Nazar, MD





before



after 3 treatments

courtesy of Mariela Nazar, MD



before

after 4 treatments

courtesy of Mariela Nazar, MD



before



after 3 treatments

courtesy of Mariela Nazar, MD

IPL TREATMENT – ACNE



before



after 2 treatments

courtesy of Mariela Nazar, MD



**INTENSE PULSED
LIGHT (IPL)**



**Kimberly
Cockerham, MD**

FACIAL AESTHETICS, LASERS & RECONSTRUCTIVE SURGERY

Central Valley Eye Medical Group, Inc.